



# INDOFINE Chemical Company, Inc.

121 Stryker Lane, Bldg. 30

Hillsborough, NJ 08844 USA

Phone: (908) 359-6778; Fax: (908) 359-1179

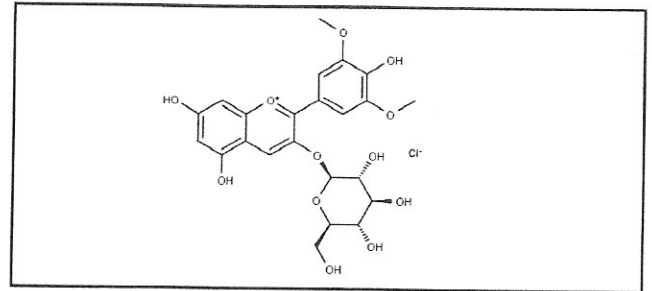
## Certificate Of Analysis

020911S

OENIN CHLORIDE

Lot No.: 19121737

CAS RN	7228-78-6
MOL FORMULA	C <sub>23</sub> H <sub>25</sub> O <sub>12</sub> Cl
MOL WEIGHT	528,87



TEST	METHOD	UNIT	SPECIFICATION	RESULT
Appearance	Visual		Dark powder	Conform
Potency	UV		$\epsilon$ (538 nm, MeOH+0,1% HCl) = 35 000 +/- 3000	35920
Water content	KF	% w/w		4,5
Residual solvents	GC-HS	% w/w		< 0,1
Inorganics	ICP-MS	% w/w		0,3
Purity	HPLC	% area	$\geq 95,0$	97,4
Assay	Calculated (*)	% w/w		92,7

(\*) Assay = Purity by HPLC x (100 - %water - %solvents - %inorganics)

### CHROMATOGRAPHIC PURITY / HPLC

Column : Atlantis dC18 - 4,6x150 mm - 3  $\mu$ m

Temperature : 30°C

Mobile phase :

Gradient: B from 5% to 60% in 20 min then 60% to 100% in 5 min then 5 min isocratic 100%

Flow rate : 1 ml/min

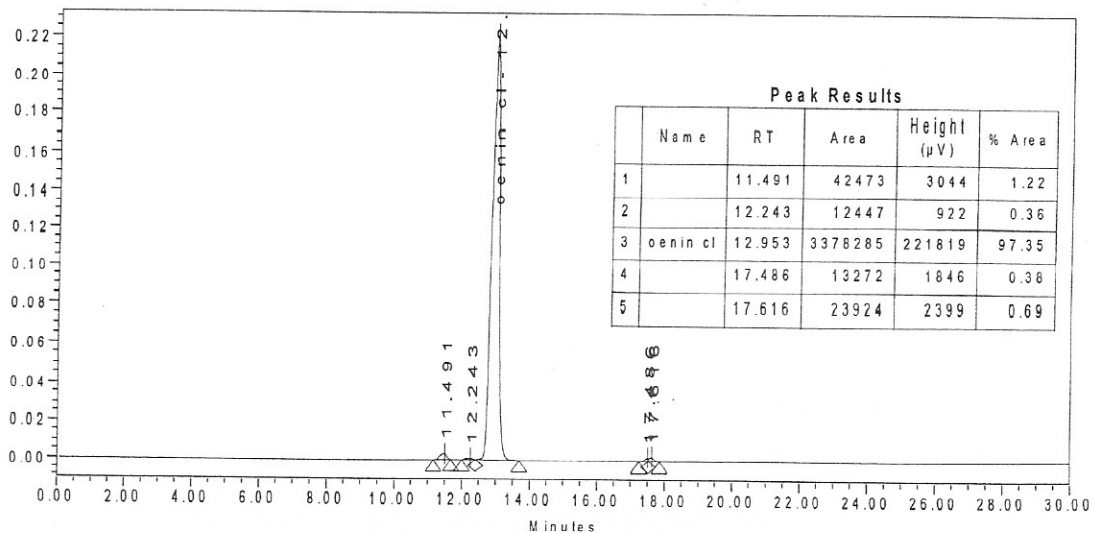
A = Water + 10% HCOOH / B = MeOH

Injection volume : 5  $\mu$ l

Detection :

UV 530 nm

Injection solvent : MeOH + 0,1% HCl



LONG TERM STORAGE : Below -15°C in a dry and dark place